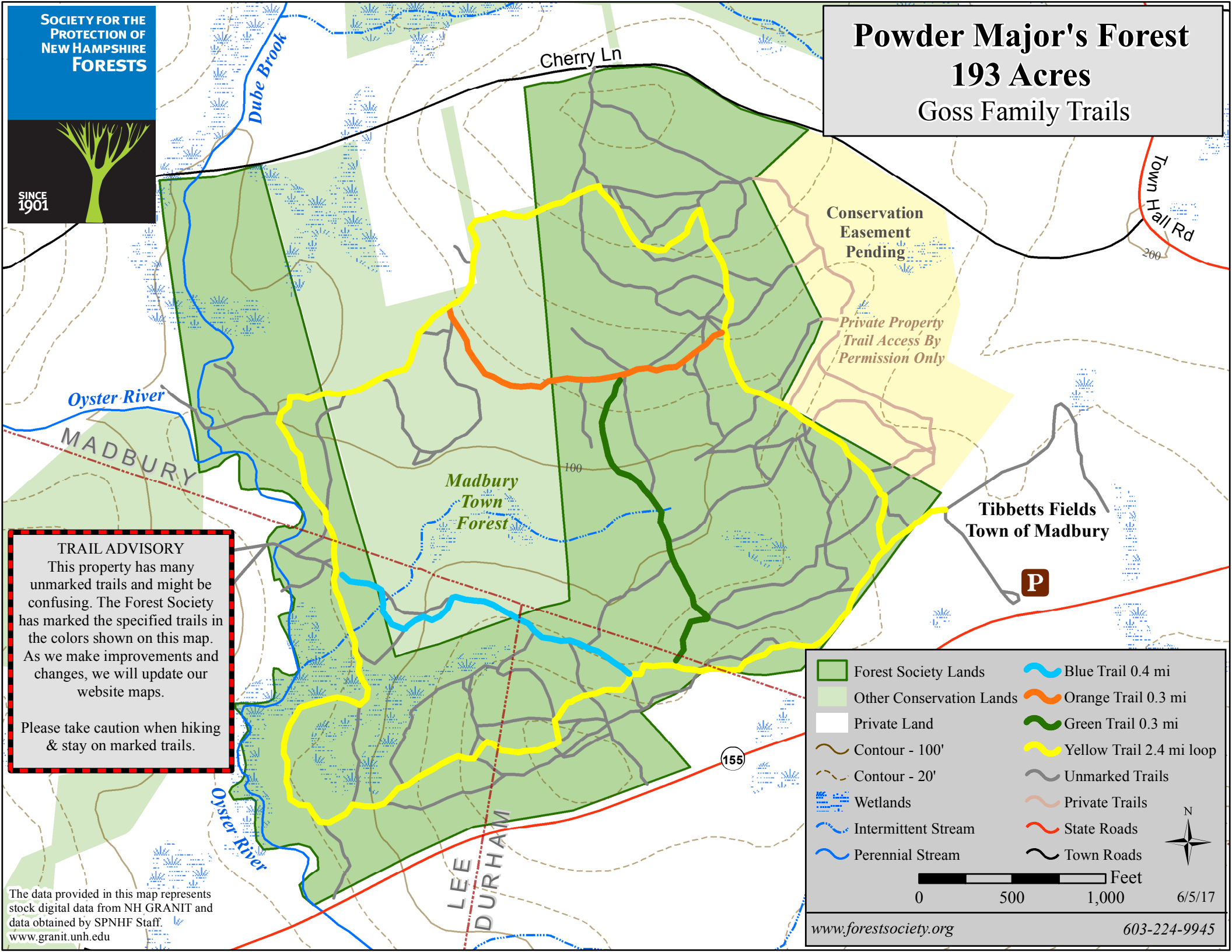




Powder Major's Forest

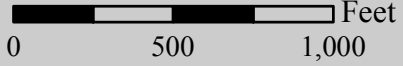
193 Acres

Goss Family Trails



TRAIL ADVISORY
 This property has many unmarked trails and might be confusing. The Forest Society has marked the specified trails in the colors shown on this map. As we make improvements and changes, we will update our website maps.
 Please take caution when hiking & stay on marked trails.

- Forest Society Lands
- Other Conservation Lands
- Private Land
- Contour - 100'
- Contour - 20'
- Wetlands
- Intermittent Stream
- Perennial Stream
- Blue Trail 0.4 mi
- Orange Trail 0.3 mi
- Green Trail 0.3 mi
- Yellow Trail 2.4 mi loop
- Unmarked Trails
- Private Trails
- State Roads
- Town Roads



6/5/17

The data provided in this map represents stock digital data from NH GRANIT and data obtained by SPNHF Staff.
www.granit.unh.edu